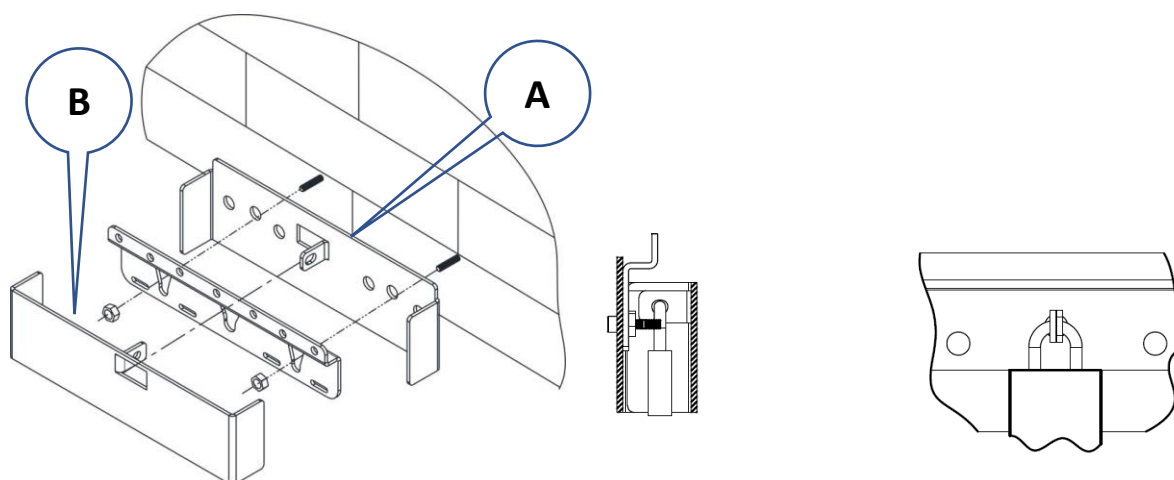


Anti-theft security bracket installation instructions

Compatible with all Onsen continuous flow gas hot water units

1. Determine the correct position of the Onsen hot water unit and ensure wall reinforcement is suitable.
2. Secure the top mounting bracket of the Onsen hot water unit to the wall with two mounting screws.
3. Place the rear Anti-theft bracket (A) behind the lower bracket of the Onsen hot water unit allowing the locking tab to pass through the keyhole of the lower bracket.
4. With the brackets in position drill two holes for the mounting screws and secure both lower brackets.
5. Connect gas, water, and power supply.
6. Commission the hot water unit as required.
7. Place the front anti-theft bracket (B) allowing it to slide into the rear bracket covering the water unit bracket and the mounting screws.
8. Secure the anti-theft bracket with a padlock (not supplied), ensure the keys are left with the owner of the Onsen hot water unit.



Note:

Padlock to be provided by the installer/owner, padlock shackle diameter not to exceed 6mm, inner shackle length no shorter than 50mm. Ensure the key is labelled and kept in a safe place if required for future access.